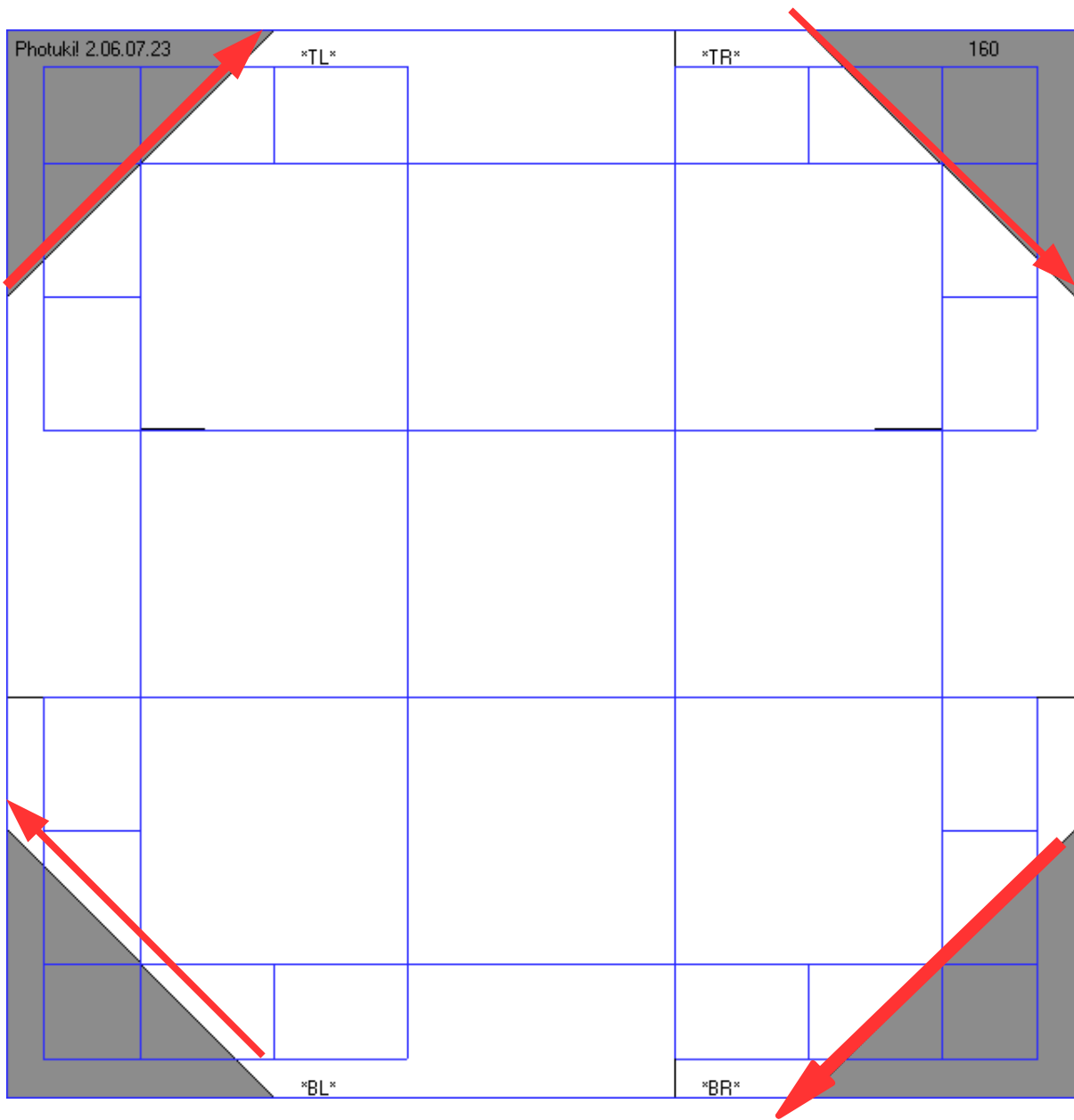


# Making rectangular boxes in Photuki



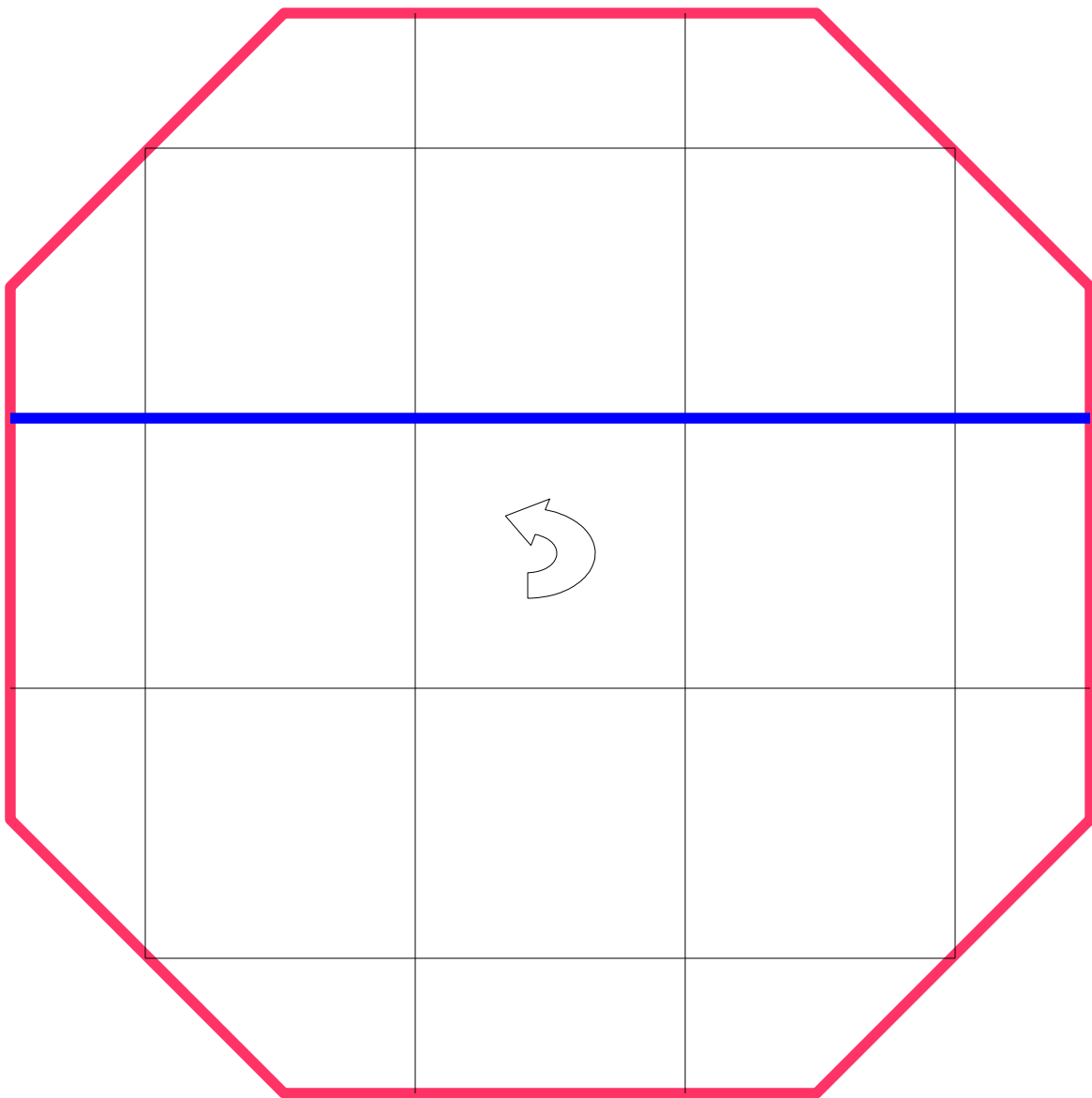
Design and illustration by Michael J. Raley  
© 2006.



Print two Photuki bitmap templates from your photo editor application. The bottom one can be created with a blank (white) bitmap, while the top can use a photograph in the center face surrounded by tiles or other repetitive patterns for effect on the other faces. Be sure to uncheck the “white mask” option from the global effects tab. When folded the center photo will be in rotation 45 degrees from the corners of the box.

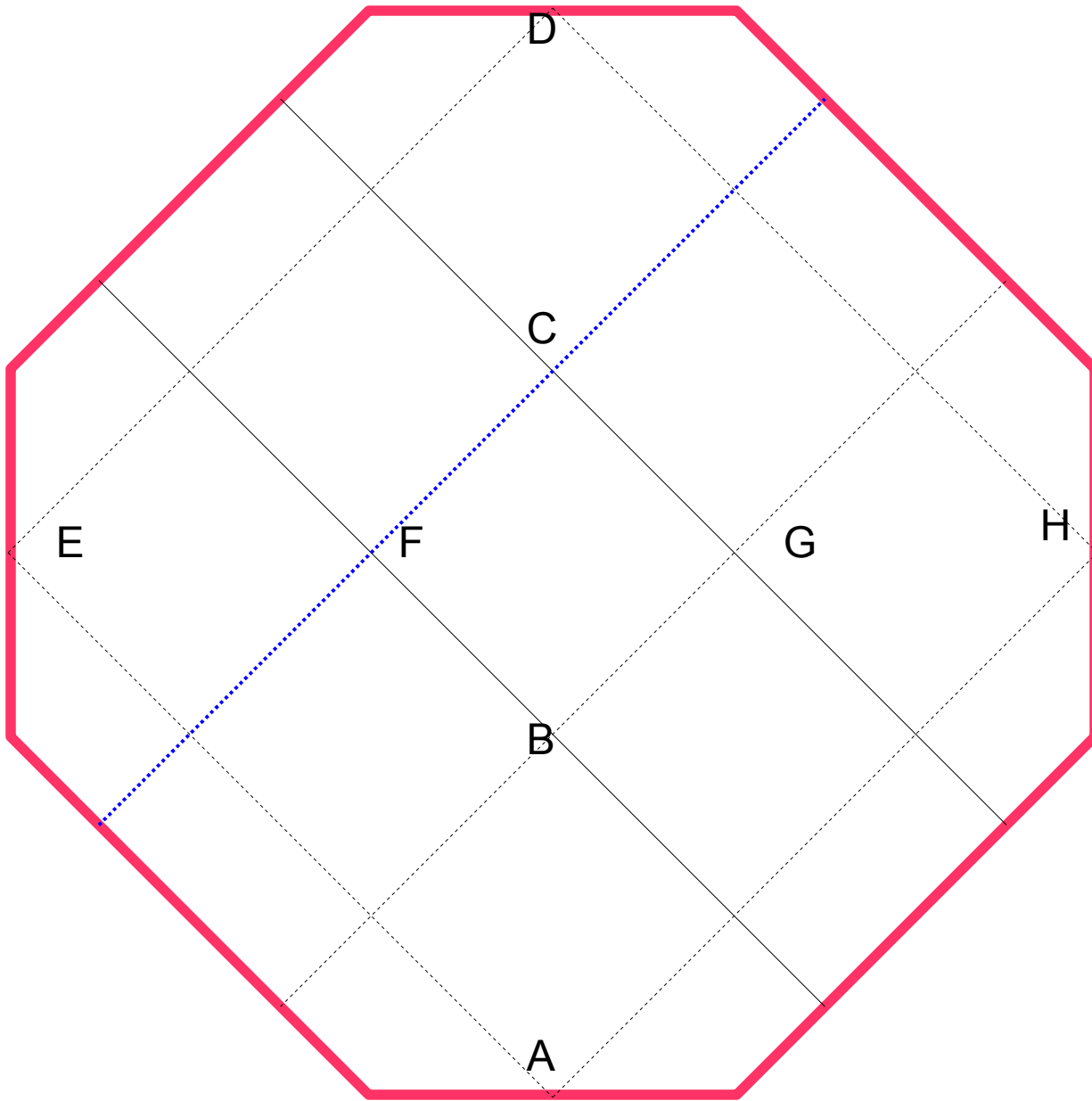
The bottom piece should be printed about .2 inches smaller than the top page to allow it to fit snugly but not too tight.

Cut around the octagon pattern to remove the corners.



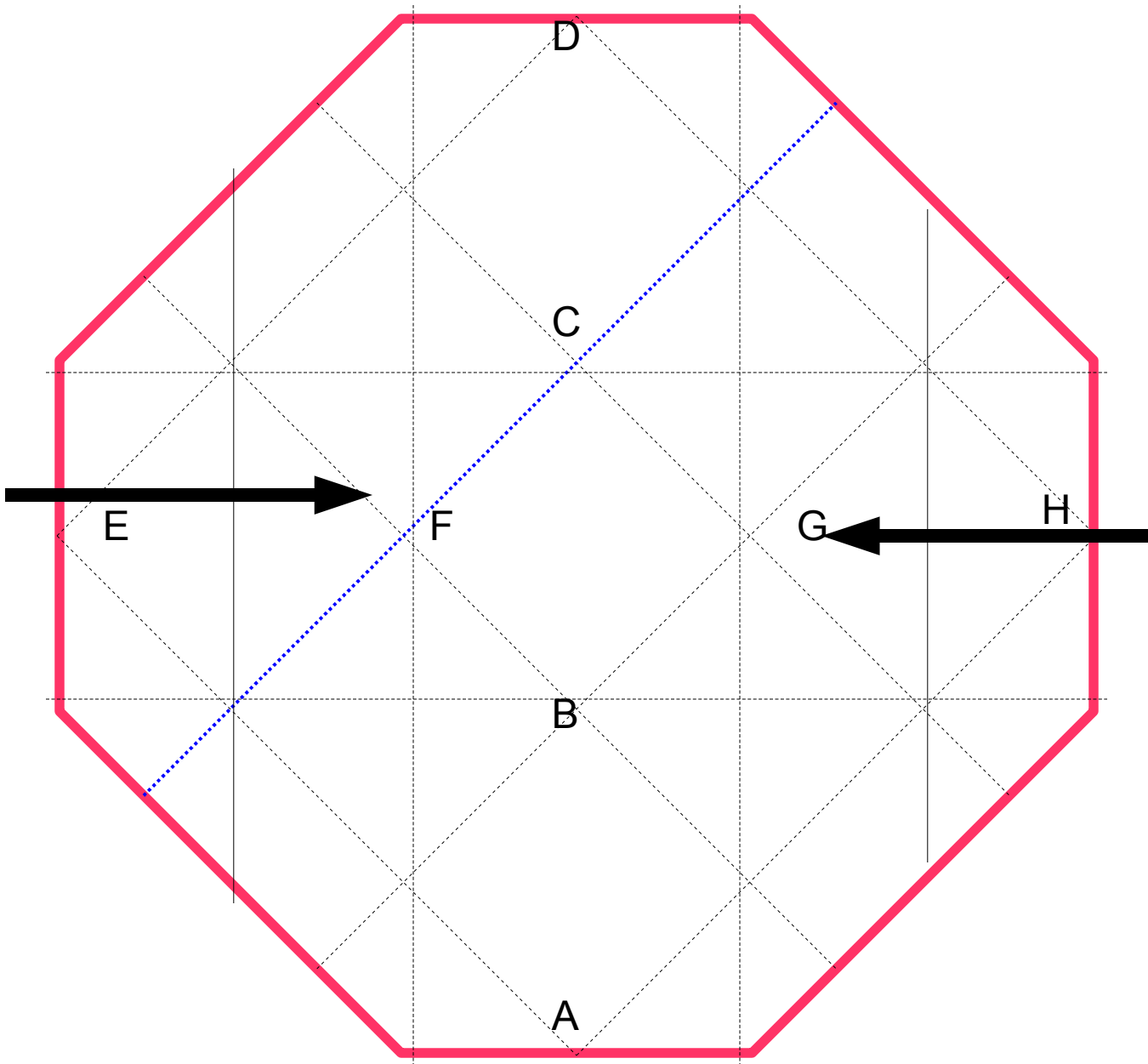
Next mountain fold (away from you so the crease rises) and unfold all the horizontal and vertical lines which separate the image faces.

Then rotate 45 degrees so the horizontal lines all become diagonal.

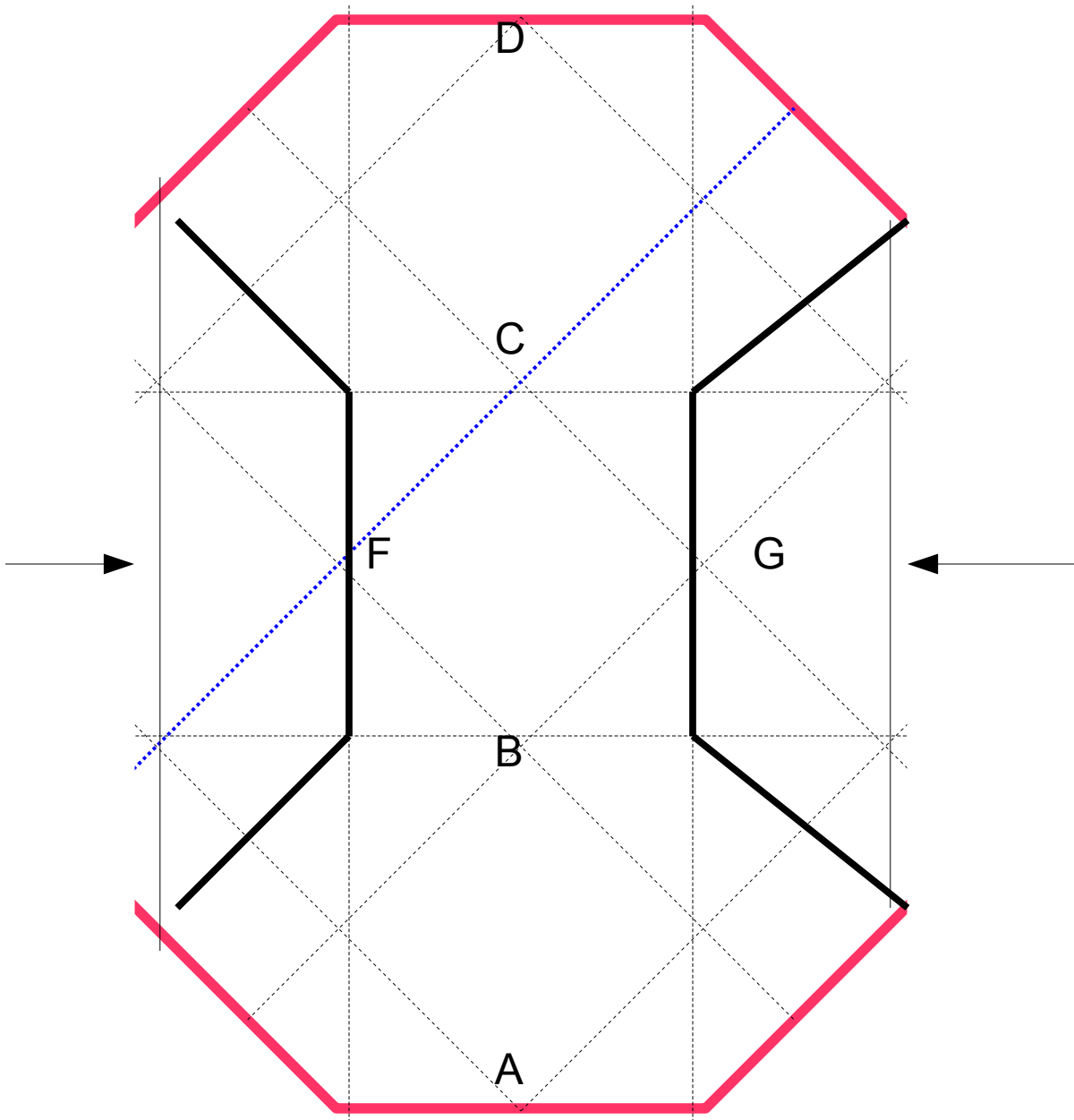


Mountain fold and unfold to create horizontal & vertical lines;  
point A to B then point A to C  
Point D to C then point D to B  
point E to F then point E to G  
point H to G then point H to F

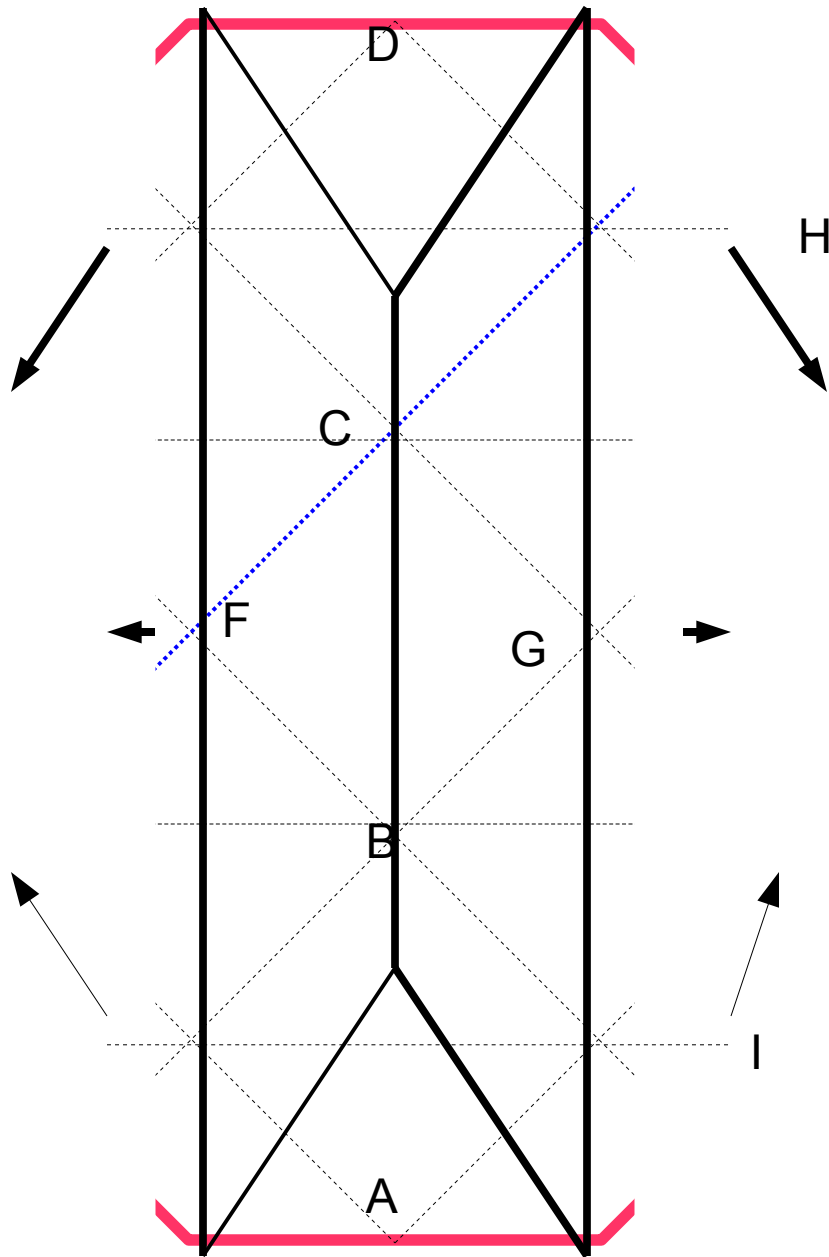
Next flip the paper over



Narrow sides;  
valley fold E to F and H to G

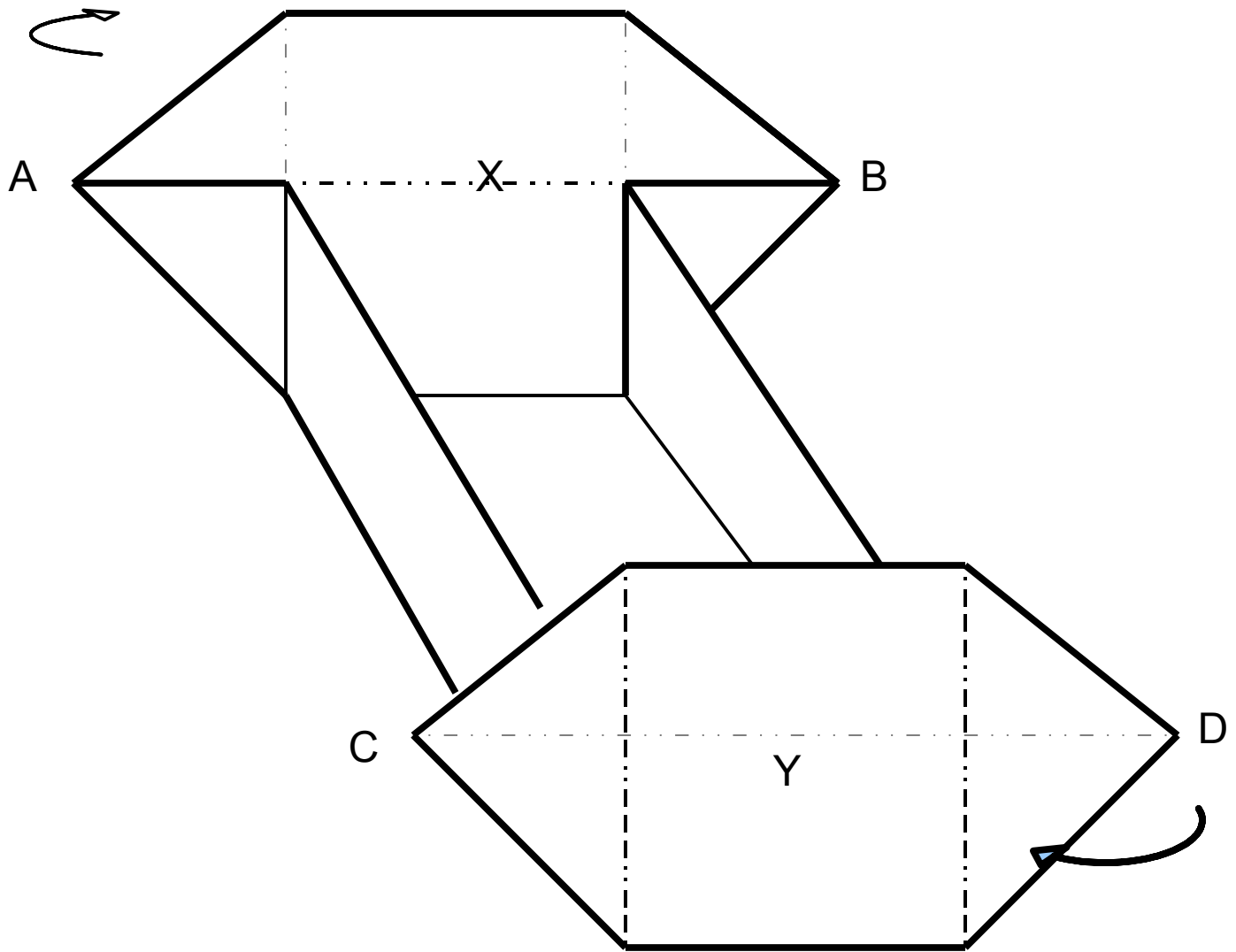


Fold sides in again so the edges meet in the center



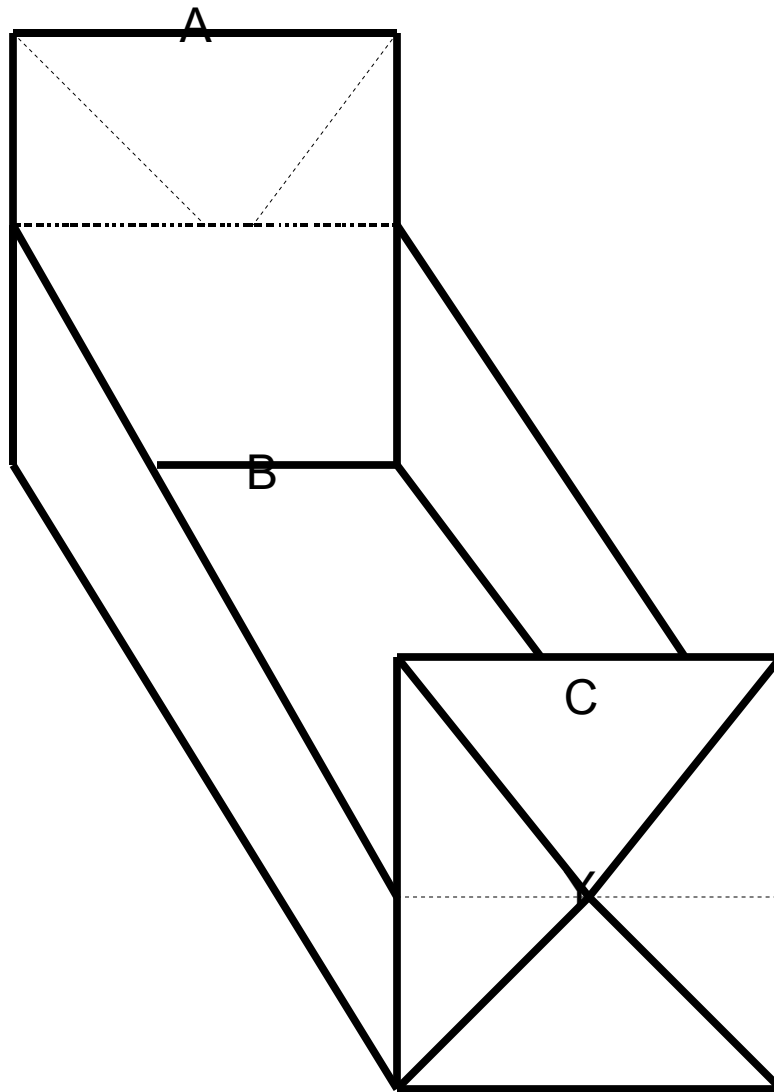
Allow the previously folded sides to open up as you lift end D up by pivoting on the horizontal line at C. While doing that, pop the upper layer at H out to form triangular limbs, (see the next page for how it should wind up looking).

In the same phase, bring point A up pivoting on B to create the same effect on that end.



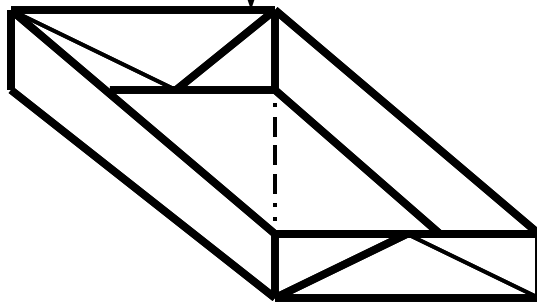
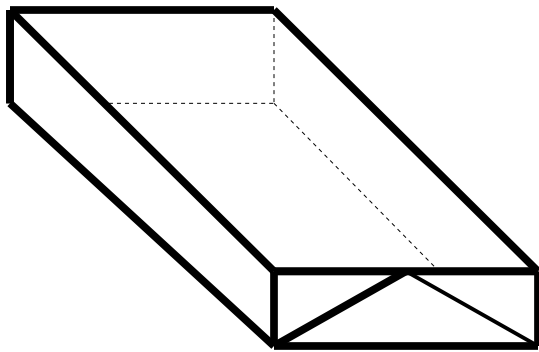
Approximate 3D view of box fold in progress;  
fold tips at A and B behind, toward X  
Repeat on other side by bringing C and D toward Y





Approximate 3D view of box fold in progress;  
Fold the two end flaps down into the box.  
Pinch and crease well. Some double sided tape  
will help hold it together.

.



Repeat all instructions with the other page you printed. Fit the two pieces together to make a box.

Alternate; to make a traditional Masu box inside fold the triangular limbs from page 8 , making all the sides uniform.